

Mckinney

TRAILERS & CONTAINERS™
Rentals & Sales

WE RENT & SELL REEFER CONTAINERS

Perfect for:

- Restaurants
 - Seasonal storage
 - Bulk inventory
- Distributors
 - Produce
 - Seafood
 - Meat
- Grocery stores
- Wholesale Food Co.
- Flower shops
- Medical facilities
- Schools
- Farms
- Fairs/Markets
- Military

Reefer Sizes:

20'L x 8'W x 8½'H

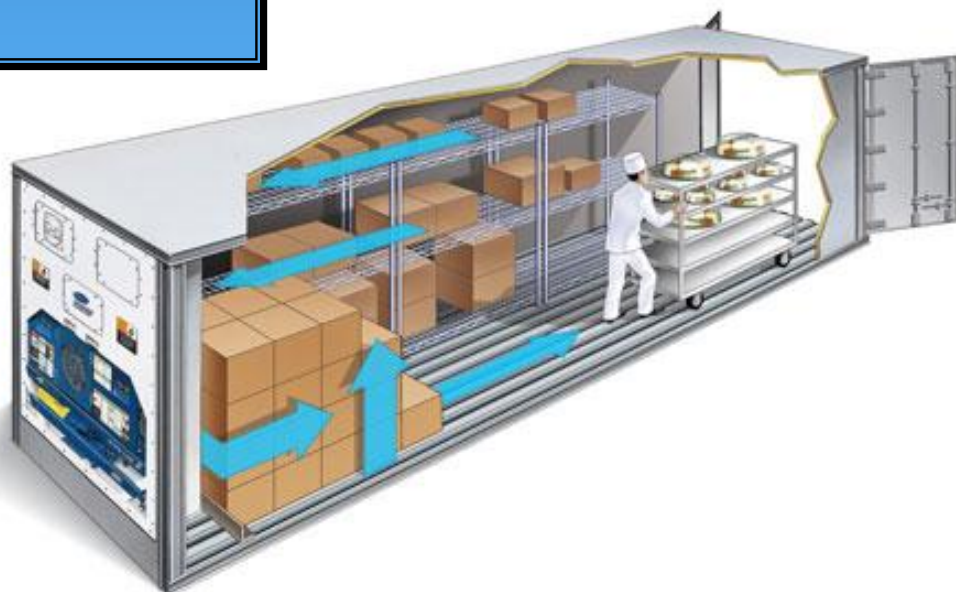
40'L x 8'W x 9½'H

Power Requirements:

230V, 3 phase power

460V, 3 phase power

Units will Chill, Freeze, or Heat
Capable of holding temp's from
0°F - 70°F.



Benefits of Renting & Leasing:

McKinney's short-term rentals and long-term leases may be the perfect equipment choice for you. Use the storage container when you need it – then return it. Free up capital that you'd otherwise have to invest in expensive equipment; thereby removing long-term debt on your balance sheet.

McKinney reefer containers are newer, high-quality containers and are available in 20 & 40-foot sizes. Our experienced technicians will even inspect the site, deliver and set up your reefer container. We'll be happy to give you details about our monthly specials when we receive your call.

McKinney reefer containers run on electricity, so you will not be billed for additional hourly or mileage charges.

We will deliver and pick up the unit with one of our numerous drop-delivery vehicles.

McKinney offers 24/7 no cost maintenance and repairs for all refrigerated container rentals.

When it comes to needing extra freezer or cooler space, just call McKinney to hear about details on great pricing and delivery options.



Suggestions for your Reefer Container

- ◆ Place front of reefer no closer than 10' to nearest walls.
- ◆ The aluminum floor provides air flow. Debris such as cardboard or plastic should not accumulate below the surface as this will obstruct air flow.
- ◆ Try to raise the reefer off the ground and tilt slightly to back doors, this will allow for drainage. Keep debris clear from the drains in the front and rear of unit.
- ◆ Always turn unit off prior to opening doors. This helps to keep the cold air in the unit.

Additional Options for your Reefer

- ◆ Depending on the application and how the container is equipped, it may be helpful to install a thermometer to monitor both return air temperature and other discharge air temperature. This helps monitor highly sensitive perishable products.
- ◆ Install a plastic curtain at rear door to keep heat out when doors are open.
- ◆ Install a passage door and window to allow removal of product without keeping the doors open.
- ◆ McKinney has chassis' available to bring the container to dock height for loading and unloading convenience.



Reefer Electrical Requirements

Determine the electrical requirements prior to the reefer being delivered. If you are hesitant, we recommend that your electrician contact a McKinney employee at 800-850-3588.

- ◆ Unit requires a three phase electrical system with a supply voltage of 460-volt.
 - ⊕ We also have a limited supply of reefers with 230-volt dual voltage transformers.
- ◆ Electrical system supports a voltage variance of (+) or (-) 15%.
- ◆ Recommended power frequency is 60 Hz, however can take 50 Hz.
- ◆ Electrical system is programmed to work with the amperages: 15, 17, 19, 21, and 23.
 - ⊕ The lower the current amperage, the lower the cooling capacity. We recommend using 21 amps.
- ◆ Power supply must be grounded.
 - ⊕ Power supply must have circuit breakers of a minimum of 30 amps per phase.
 - ⊕ If your power supply is 230 (260-200) Volts, then the power supply (container) must be grounded and have circuit breakers of 70 amps per phase.
- ◆ Unit comes with a 460 Volt cable and an ISO standard CEE-power plug (59 feet/18 meters).
 - ⊕ The 230 Volt cable does not have a power plug.
- ◆ Unit must be protected from electrical power surges.
 - ⊕ Unit comes equipped with internal circuit breakers in case of power surges.
 - ⊕ The 460 Volts circuit breaker (CB1) trips at 29 amps and the 230 Volts circuit breaker (CB2) trips at 50 amps.
 - ⊕ Unit has fuses that protect the fan motors and control circuits.
 - *Internal circuit breakers do not eliminate the need for protection at the electrical supply side. Circuit breakers and surge protects at the electrical source are mandatory for installation.*
- ◆ Do not arc weld on any components of the container or to any metal or conductive material on which the container is sitting.
 - ⊕ The machinery electronic circuits of the unit microprocessor control system are very sensitive.